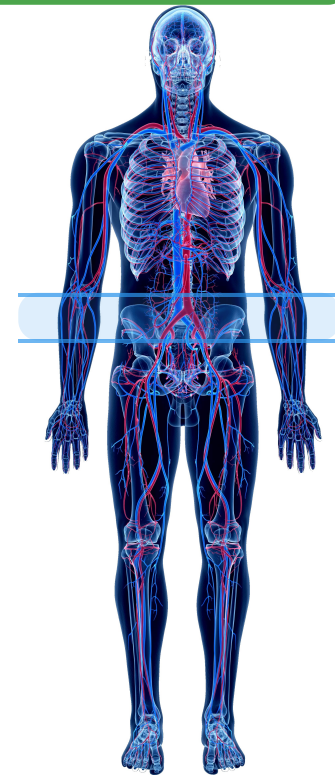
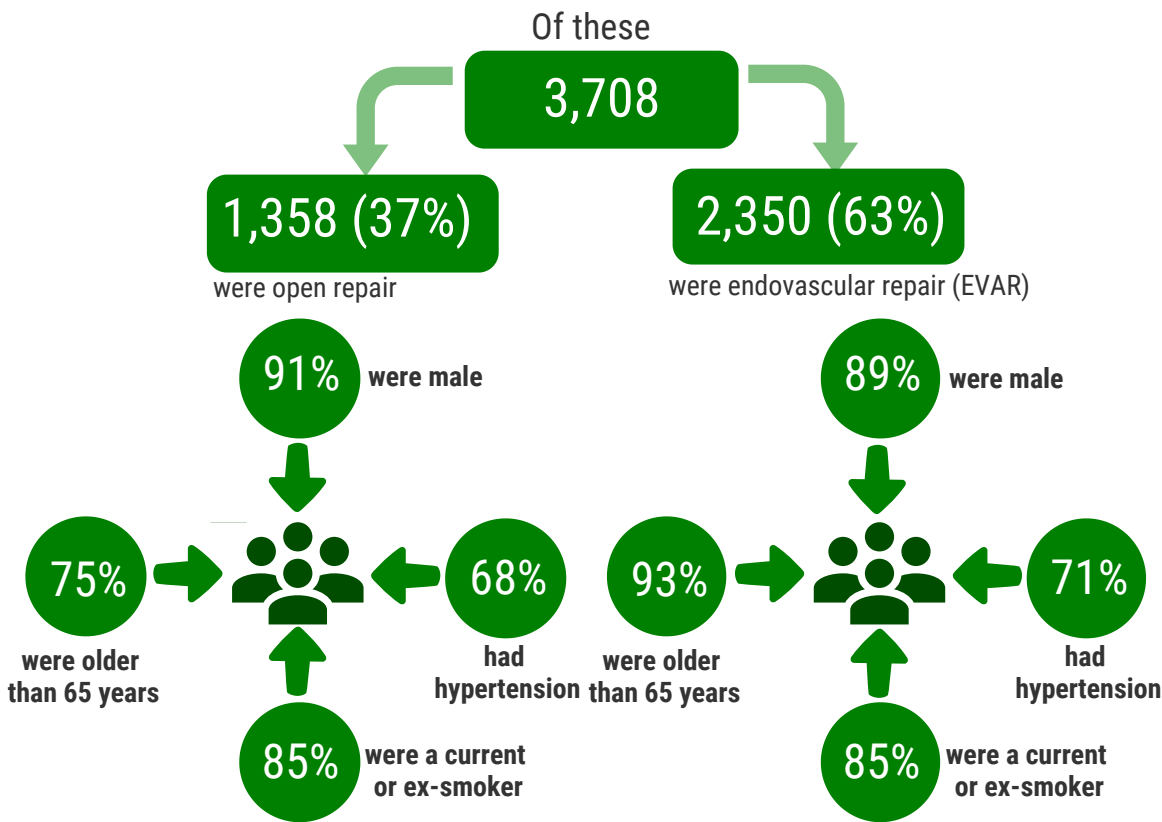


# Repair of abdominal aortic aneurysm (AAA) to prevent rupture

AAA is an abnormal expansion of the aorta (the largest vessel taking blood away from the heart). If left untreated, it may enlarge and rupture causing fatal internal bleeding. An infra-renal aneurysm occurs below the level of the renal (kidney) arteries within the aorta.

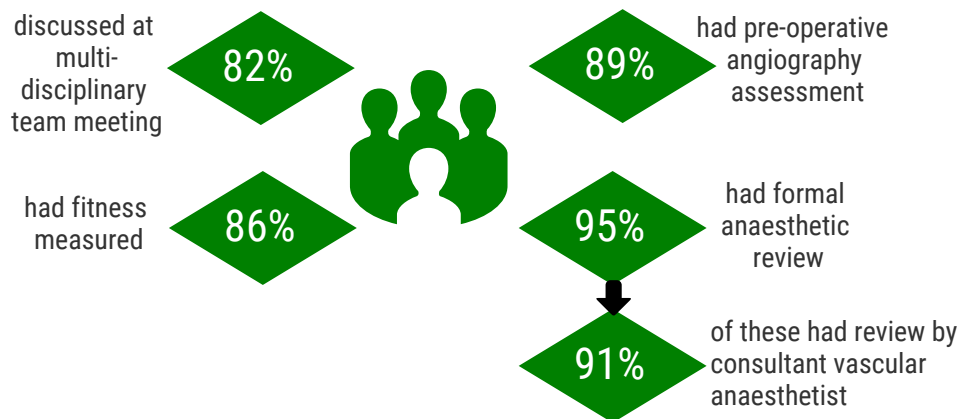
There were 3,708 elective infra-renal AAA repairs submitted to the NVR in 2018, which is approximately 91% of all procedures carried out in the UK.



## Glossary

The average is the median; "typically between" is the interquartile range.

## How were patients assessed?



Most patients waited 70 days between vascular assessment and AAA repair

However for 16/72 vascular units, 25% of patients waited more than 140 days

## Patient outcomes after surgery

